

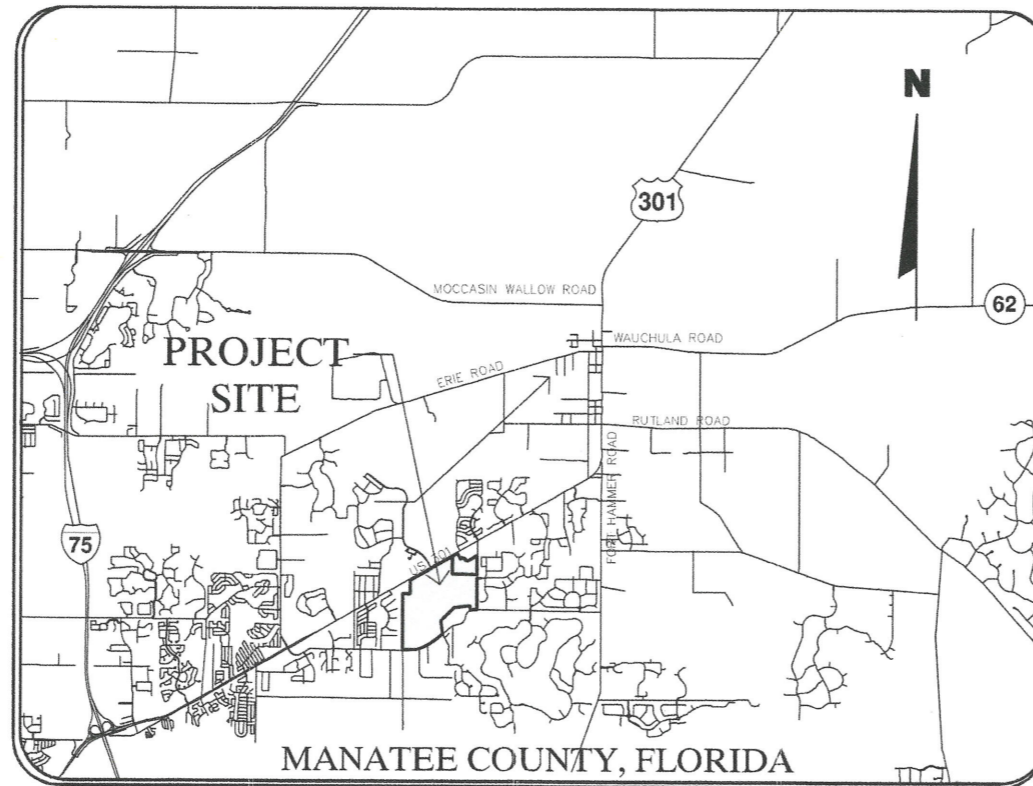
PAVING AND GRADING RECORD DRAWINGS

SILVERLEAF PHASE 1A

(MANATEE COUNTY GDP PHASE 1, 2 AND A PORTION OF PHASE 3)
SWFWMD FKA PHASES 1, 2 & 3

PRELIMINARY PLAT / PRELIMINARY SITE PLAN / FINAL SITE PLAN
CONSTRUCTION PLANS

COUNTY SECTION NO. 1320 & M.P. 7.928-M.P. 8.023



MANATEE COUNTY, FLORIDA

VICINITY MAP

SECTION 1, TOWNSHIP 34 S, RANGE 18 E
SECTION 6, TOWNSHIP 34 S, RANGE 19 E

FOR:

**MML I LLC
& PGCI IV LLC**

5800 LAKEWOOD RANCH BLVD.
SARASOTA, FLORIDA 34240

PHONE: (941) 328-1111

BY:

King
ENGINEERING ASSOCIATES, INC.

2930 University Parkway
Sarasota, Florida 34243
Phone 941 358-6500
Fax 941 358-6510
www.kingengineering.com
Engineering License #2610

1. AT LEAST 72 HOURS IN ADVANCE OF BEGINNING CONSTRUCTION OF THE PROJECT THE CONTRACTOR SHALL CONTACT THE LOCAL F.D.O.T. ENGINEER'S OFFICE TO SECURE GENERAL USE PERMITS AND/OR OTHER PERMITS AS REQUIRED FOR WORKING WITHIN THE DEPARTMENTS RIGHT-OF-WAY.

2. THESE PLANS HAVE BEEN PREPARED IN ACCORDANCE WITH AND ARE GOVERNED BY THE STATE OF FLORIDA DEPARTMENT OF TRANSPORTATION, STANDARD SPECIFICATIONS FOR ROAD AND BRIDGE CONSTRUCTION (DATED 2013) AND DESIGN STANDARDS BOOKLET (DATED 2013).
FOR DESIGN STANDARDS REVISIONS, CLICK ON "DESIGN STANDARDS" AT THE FOLLOWING WEB SITE:
<http://www.dot.state.fl.us/rddesign/>

ENGINEER'S CERTIFICATE

I, THE UNDERSIGNED PROFESSIONAL ENGINEER, HEREBY CERTIFY THAT TO THE BEST OF MY KNOWLEDGE AND BELIEF, AND BASED ON THE CERTIFICATION PROVIDED BY THE SURVEYOR OF RECORD, THE IMPROVEMENTS DEPICTED HEREON HAVE BEEN CONSTRUCTED IN SUBSTANTIAL COMPLIANCE WITH THE APPROVED PLANS. THE UNDERSIGNED ENGINEER IS NOT CERTIFYING THE ACCURACY OF THE DRAWINGS PREPARED BY THE SURVEYOR.

KING ENGINEERING ASSOCIATES, INC.
2930 UNIVERSITY PARKWAY
SARASOTA, FL 34243
O. DENISE GREER, P.E. #47679
DATE OF CERTIFICATION:

Approval Type: PP/PSP/FSP/CP	Project Name: SILVERLEAF PHASE 1A, B, C
APPROVED _____	Date: PDR-11-14(P)/13-5-02 (P)/FSP-13-04
PROJECT PLANNER (BADS) _____	PROJECT ENGINEER (PW) _____
PROJECT ENGINEER (PW) _____	CONCURRENCY (BADS) _____
CONCURRENCY (BADS) _____	ENVIRONMENTAL PLANNING (BADS) _____
ENVIRONMENTAL PLANNING (BADS) _____	ENVIRONMENTAL HEALTH _____
ENVIRONMENTAL HEALTH _____	FIRE DISTRICT _____
FIRE DISTRICT _____	OWNER/AGENT _____
OWNER/AGENT _____	

NOTE: AS-BUILT INFORMATION IS SHOWN IN BRACKETS []
NOTE: AS-BUILT INFORMATION PROVIDED BY CONTRACTOR IS SHOWN IN PARENTHESES ()

AS-BUILT DRAWING

SCHAPPACHER SURVEYING L.L.C.
CERTIFICATE OF AUTHORIZATION LB 0007977
BRADENTON
8004 80th AVENUE EAST
BRADENTON, FLORIDA 34208
(941) 748-0000 (941) 888-0000 FAX

I HEREBY CERTIFY THAT THE AS-BUILT DRAWING OF THE IMPROVEMENTS SHOWN IN BRACKETS [] UPON THE DESIGN CONSTRUCTION PLANS IS TO THE BEST OF MY KNOWLEDGE, INFORMATION, AND BELIEF A TRUE AND CORRECT REPRESENTATION OF THE IMPROVEMENTS AS EXISTING AND WERE COLLECTED IN THE FIELD BY A REPRESENTATIVE UNDER THE DIRECT SUPERVISION OF THE SURVEYOR AND APPROVED.

DATE OF FIELD SURVEY: 05/30/14

NOT VALID WITHOUT THE SIGNATURE AND THE ORIGINAL PAVED SEAL OF A FLORIDA LICENSED SURVEYOR AND MAPPER.

TONY L. PURSLEY, P.S.M.
FLORIDA CERTIFICATE NO. 4481

Sheet Number	Sheet Title
C1.01	COVER
C1.02	NOTES AND LEGENDS
C1.03	NOTES AND LEGENDS
C2.01	CONSTRUCTION POLLUTION PREVENTION PLAN
C2.02	LIMITS OF CONSTRUCTION PLAN
C3.01	FINAL SITE PLAN AND PRELIMINARY PLAT
C3.02	FINAL SITE PLAN AND PRELIMINARY PLAT
C3.03	FINAL SITE PLAN AND PRELIMINARY PLAT
C3.04	FINAL SITE PLAN AND PRELIMINARY PLAT
C3.05	FINAL SITE PLAN AND PRELIMINARY PLAT
C3.06	FINAL SITE PLAN AND PRELIMINARY PLAT
C3.07	FINAL SITE PLAN AND PRELIMINARY PLAT
C4.01	PAVING, GRADING AND DRAINAGE PLAN
C4.02	PAVING, GRADING AND DRAINAGE PLAN
C4.03	PAVING, GRADING AND DRAINAGE PLAN
C4.04	PAVING, GRADING AND DRAINAGE PLAN
C4.05	PAVING, GRADING AND DRAINAGE PLAN
C4.06	PAVING, GRADING AND DRAINAGE PLAN
C4.07	PAVING, GRADING AND DRAINAGE PLAN
C4.08	PAVING, GRADING AND DRAINAGE PLAN
C4.09	PAVING, GRADING AND DRAINAGE PLAN
C4.10	PAVING, GRADING AND DRAINAGE PLAN
C4.11	PAVING, GRADING AND DRAINAGE PLAN
C4.12	PAVING, GRADING AND DRAINAGE PLAN
C4.13	PAVING, GRADING AND DRAINAGE PLAN
C4.14	CHIN ROAD IMPROVEMENTS
C4.15- C4.20	F.D.O.T. DRIVEWAY IMPROVEMENT PLANS
C4.21	F.D.O.T. LIGHTING POLE RELOCATION PLAN
C4.22- C4.26	F.D.O.T. 301 XSEC
C4.27	F.D.O.T. DRIVEWAY IMPROVEMENT DETAILS
C5.00	UTILITY PLAN AND PROFILE KEY
C5.01	UTILITY PLAN AND PROFILE
C5.02	UTILITY PLAN AND PROFILE
C5.03	UTILITY PLAN AND PROFILE
C5.04	UTILITY PLAN AND PROFILE
C5.05	UTILITY PLAN AND PROFILE
C5.06	UTILITY PLAN AND PROFILE
C5.07	UTILITY PLAN AND PROFILE
C5.08	UTILITY PLAN AND PROFILE
C5.09	UTILITY PLAN AND PROFILE
C5.10	UTILITY PLAN AND PROFILE
C5.11	UTILITY PLAN AND PROFILE
C5.12	UTILITY PLAN AND PROFILE
C5.13	UTILITY PLAN AND PROFILE
C5.14	UTILITY PLAN AND PROFILE
C5.15	UTILITY PLAN AND PROFILE
C5.16	UTILITY PLAN AND PROFILE
C5.17	UTILITY PLAN AND PROFILE
C5.18	UTILITY PLAN AND PROFILE
C5.19	UTILITY PLAN AND PROFILE
C5.20	UTILITY PLAN AND PROFILE
C5.21	UTILITY PLAN AND PROFILE
C5.22	UTILITY PLAN AND PROFILE
C6.01- C6.03	RECLAIM UTILITY CROSSING PLAN
C7.01	TYPICAL SECTIONS AND DETAILS
C8.01	EROSION CONTROL DETAILS
C9.01	GRADING AND DRAINAGE DETAILS
C9.02	GRADING AND DRAINAGE DETAILS
C9.03	GRADING AND DRAINAGE DETAILS
C9.04	GRADING AND DRAINAGE DETAILS
C9.05	GRADING AND DRAINAGE DETAILS
C10.01	DITCH BLOCK AND WETLAND F CROSS SECTION AND PLANTING PLAN
C10.02	SWFWMD IMPACTS
C11.01	WATER DISTRIBUTION DETAILS
C11.02	WATER DISTRIBUTION DETAILS
C12.01	SANITARY SEWER DETAILS
M1.01	PUMP STATION #1
M1.02	PUMP STATION ELECTRICAL DETAILS
M1.03	PUMP STATION DETAILS
L1.01	CODE LANDSCAPE PLAN
L1.02	CODE LANDSCAPE PLAN
L1.03	CODE LANDSCAPE PLAN
L1.04	CODE LANDSCAPE PLAN
L1.05	CODE LANDSCAPE PLAN
L1.06	CODE LANDSCAPE PLAN
L1.07	CODE LANDSCAPE PLAN
L1.08	CODE LANDSCAPE PLAN
L1.09	CODE LANDSCAPE PLAN
L1.10	CODE LANDSCAPE PLAN
L1.11	CODE LANDSCAPE PLAN
L1.12	CODE LANDSCAPE PLAN
L1.13	CODE LANDSCAPE PLAN

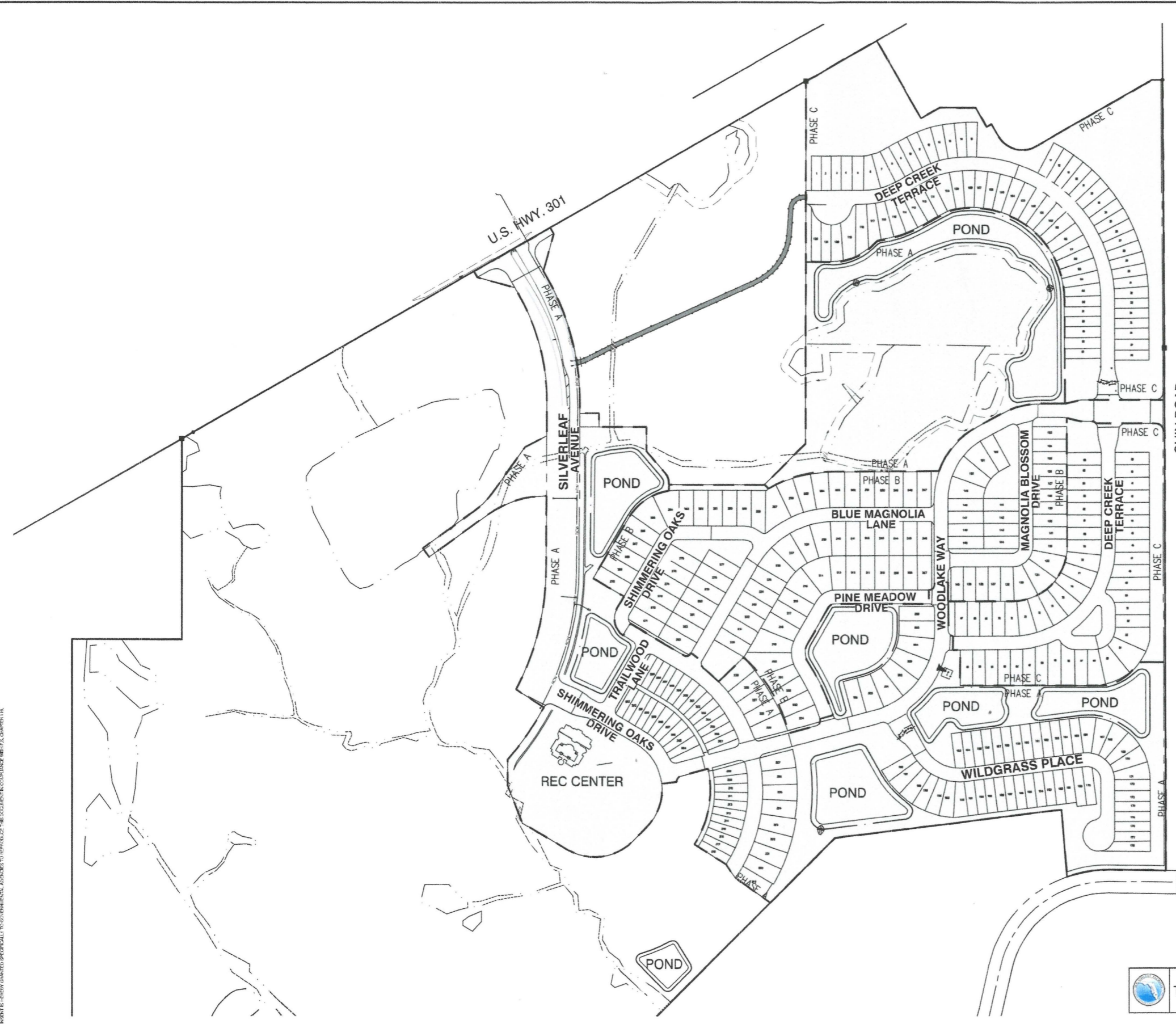
Transferred to Operation


NO.	DATE	DESCRIPTION	APPROVED BY
4	10-17-13	ADD SHEETS 6.01-6.03	
3	8-23-13	REVISIONS	
2	5-14-13	ADD SHEET C5.00	
1	4-1-13	REVISIONS	

JOB NO.	8854-009-100	SHEET NO.	C1.01
DATE	01/31/2013		
SCALE	AS SHOWN		



C:\CIVIL\8854\009\00\CADD\CDS\PLAN-OVERALL.dwg . January 29, 2014 3:25 PM. MICHAEL S. PINOITTI. King Engineering Associate Inc.



 Transferred to Operation

DESIGNED	ODG
DRAWN	MSP
CHECKED	ODG
IN CHARGE	ODG

King
ENGINEERING ASSOCIATES, INC.

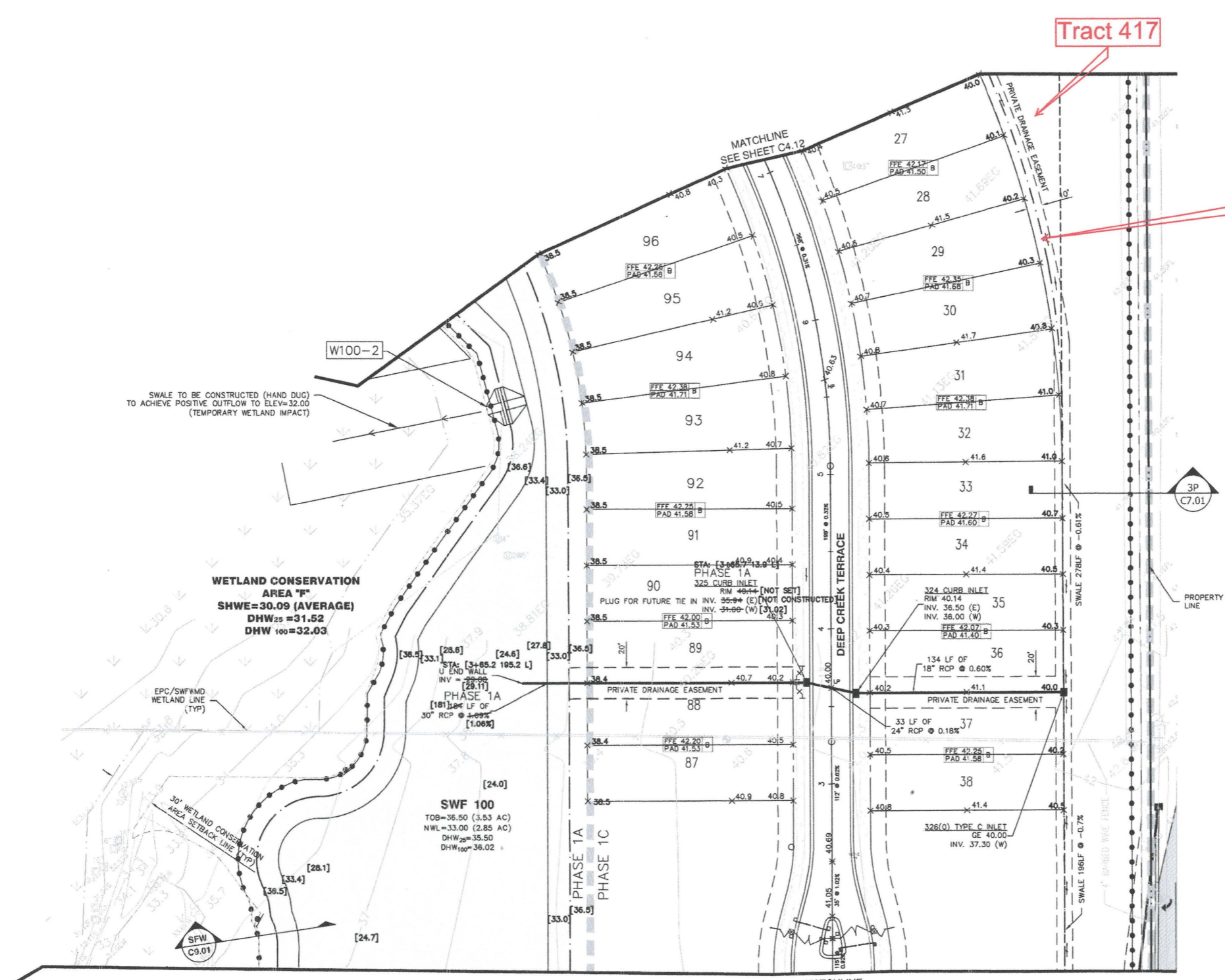
2930 University Parkway
Sarasota, Florida 34243
Phone 941 358-6500
Fax 941 358-6540
www.kingengineering.com
Engineering License #2610

SILVERLEAF PHASE 1
(SUB PHASES A, B, & C)
(SWFWMD FKA PHASES 1, 2, & 3)
FOR
MML I, LLC & PGCI, IV, LLC

LIMITS OF CONSTRUCTION PLAN

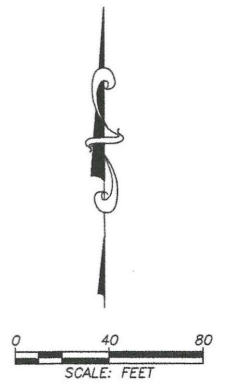
NO.	DATE	DESCRIPTION	APPROVED BY
3	1-28-13	REV STREET NAMES	
2	10-15-13	ADD STREET NAMES	
1	4-1-13	REVISED AREA AT 301 ENTRANCE	

JOB NO.	8854-009-100	SHEET NO.	C2.02
DATE	01/31/2013		
SCALE	AS SHOWN		



Tract 417

Swale



SWALE TO BE CONSTRUCTED (HAND DUG) TO ACHIEVE POSITIVE OUTFLOW TO ELEV=32.00 (TEMPORARY WETLAND IMPACT)

WETLAND CONSERVATION AREA "F"
 SHWE=30.09 (AVERAGE)
 DHW₂₅=31.52
 DHW₁₀₀=32.03

SWF 100
 TOB=36.50 (3.53 AC)
 NWL=33.00 (2.85 AC)
 DHW₂₅=35.50
 DHW₁₀₀=36.02

ENGINEER'S CERTIFICATE

I, THE UNDERSIGNED PROFESSIONAL ENGINEER, HEREBY CERTIFY THAT TO THE BEST OF MY KNOWLEDGE AND BELIEF, AND BASED ON THE CERTIFICATION PROVIDED BY THE SURVEYOR OF RECORD, THE IMPROVEMENTS DEPICTED HEREON HAVE BEEN CONSTRUCTED IN SUBSTANTIAL COMPLIANCE WITH THE APPROVED PLANS. THE UNDERSIGNED ENGINEER IS NOT CERTIFYING THE ACCURACY OF THE DRAWINGS PREPARED BY THE SURVEYOR.

KING ENGINEERING ASSOCIATES, INC.
 2930 UNIVERSITY PARKWAY
 SARASOTA, FL 34243
 O. DENISE GREER, P.E. #47679
 DATE OF CERTIFICATION:

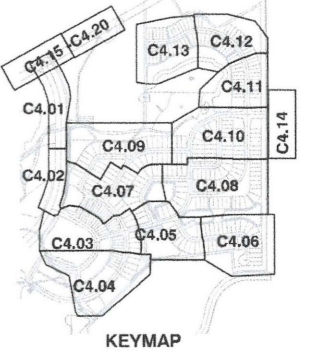
MATCHLINE SEE SHEET C4.10

NOTE: AS-BUILT INFORMATION IS SHOWN IN BRACKETS []
 NOTE: AS-BUILT INFORMATION PROVIDED BY CONTRACTOR IS SHOWN IN PARENTHESES ()

AS-BUILT DRAWING
 SCHAPPACHER SURVEYING L.L.C.
 CERTIFICATE OF AUTHORIZATION LB 0007977
 BRADENTON
 8840 74th STREET EAST
 BRADENTON, FLORIDA 34104
 (849) 748-9949 (849) 888-8888 FAX

I HEREBY CERTIFY THAT THE AS-BUILT DRAWING OF THE UNDERSIGNED, NOT VALID WITHOUT THE SIGNATURE AND THE ORIGINAL RAISED SEAL OF A FLORIDA LICENSED SURVEYOR AND MAPPER, IS A TRUE AND CORRECT REPRESENTATION OF THE AS-BUILT INFORMATION AND BELIEF A TRUE AND CORRECT REPRESENTATION OF THE IMPROVEMENTS AS SHOWN AND WERE MADE AS A REPRESENTATIVE UNDER THE DIRECTION OF THE SUPERVISOR.

DATE: 05/30/14
 TONY J. PURSLEY, P.S.M.
 FLORIDA CERTIFICATE NO. 4451



H:\Lanc Projects\SILVERLEAF S130669\ASBUILTS\PLN\FGD-11.dwg, October 15, 2014 1:28 PM, KYLE E. CROSS, King Engineering Associate Inc.
 © COPYRIGHT 2012 KING ENGINEERING ASSOCIATES, INC. DRAWINGS AND CALCULATIONS MUST BE USED IN CONFORMANCE WITH THE TERMS AND CONDITIONS OF THE LICENSE AGREEMENT. ALL RIGHTS RESERVED. THIS DOCUMENT IS THE PROPERTY OF KING ENGINEERING ASSOCIATES, INC. AND IS NOT TO BE REPRODUCED OR TRANSMITTED IN ANY FORM OR BY ANY MEANS, ELECTRONIC OR MECHANICAL, WITHOUT PERMISSION IN WRITING FROM KING ENGINEERING ASSOCIATES, INC.

DESIGNED: ODG
 DRAWN: M/SP
 CHECKED: ODG
 DATE: ODG



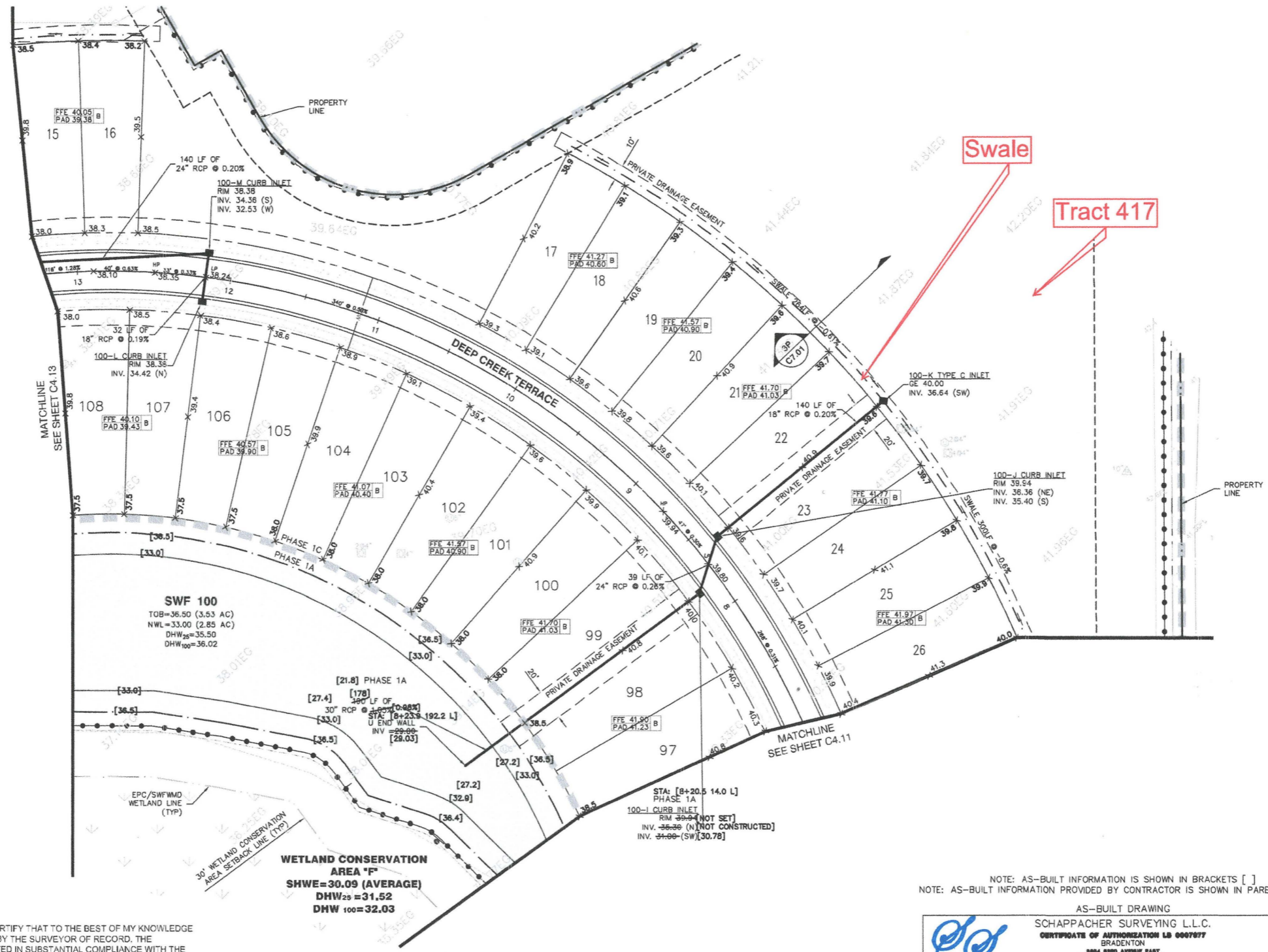
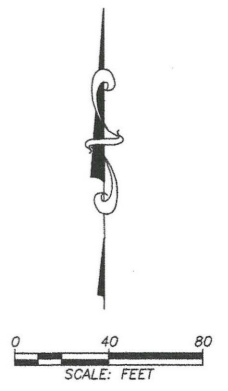
2930 University Parkway
 Sarasota, Florida 34243
 Phone 941 358-6500
 Fax 941 358-6540
 www.kingengineering.com
 Engineering License #2610

SILVERLEAF PHASE 1
 (SUB PHASES A, B, & C)
 (SWFWMD FKA PHASES 1, 2, & 3)
 FOR
 MML I, LLC & PGCI, IV, LLC

RECORD DRAWING
 PAVING, GRADING AND DRAINAGE PLAN

NO.	DATE	DESCRIPTION	APP'D BY
4	5-30-14	RECORD DRAWINGS	
3	10-15-13	REVISE P.F.	
2	8-23-13	MODIFY INLETS	
1	3-25-13	GRADING ADDED TO LOTS 29-30, 37-38, 87-96	
		SWF INFLOW PIPES INVERTS ADDED	

JOB NO. 8854-009-100
 DATE 01/31/2013
 SCALE AS SHOWN
 SHEET NO. C4.11



Swale

Tract 417

ENGINEER'S CERTIFICATE

I, THE UNDERSIGNED PROFESSIONAL ENGINEER, HEREBY CERTIFY THAT TO THE BEST OF MY KNOWLEDGE AND BELIEF, AND BASED ON THE CERTIFICATION PROVIDED BY THE SURVEYOR OF RECORD, THE IMPROVEMENTS DEPICTED HEREON HAVE BEEN CONSTRUCTED IN SUBSTANTIAL COMPLIANCE WITH THE APPROVED PLANS. THE UNDERSIGNED ENGINEER IS NOT CERTIFYING THE ACCURACY OF THE DRAWINGS PREPARED BY THE SURVEYOR.

KING ENGINEERING ASSOCIATES, INC.
2930 UNIVERSITY PARKWAY
SARASOTA, FL 34243
O. DENISE GREER, P.E. #47679
DATE OF CERTIFICATION:

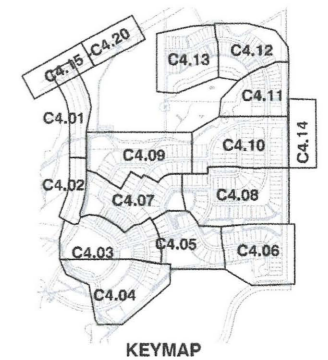
NOTE: AS-BUILT INFORMATION IS SHOWN IN BRACKETS []
NOTE: AS-BUILT INFORMATION PROVIDED BY CONTRACTOR IS SHOWN IN PARENTHESES ()

AS-BUILT DRAWING
SCHAPPACHER SURVEYING L.L.C.
CERTIFICATE OF AUTHORIZATION LB 0007077
BRADENTON
8000 BOND AVENUE SUITE 100
BRADENTON, FLORIDA 34108
(813) 740-0540 (813) 800-0000 FAX

I HEREBY CERTIFY THAT THE AS-BUILT DRAWING OF THE IMPROVEMENTS SHOWN IN BRACKETS [] UPON THIS DESIGN CONSTRUCTION PLANS, IS TO THE BEST OF MY KNOWLEDGE, INFORMATION AND BELIEF A TRUE AND CORRECT REPRESENTATION OF THE IMPROVEMENTS AS SHOWN AND NOTED BY A REPRESENTATIVE UNDER THE DIRECT SUPERVISION AND CONTROL OF THE ENGINEER.

DATE OF SURVEY: 10/15/13
DATE OF AS-BUILT: 01/31/2013
NOT VALID WITHOUT THE SIGNATURE AND THE ORIGINAL PAZED SEAL OF A LICENSED SURVEYOR AND MAPPED.

TONY K. PURSLEY, P.S.M.
FLORIDA CERTIFICATE NO. 440



H:\Lanc\Projects\SILVERLEAF\S130669\ASBUILTS\PLN\FCD-12.dwg, October 15, 2014 1:40 PM, KYLE C. CROSS, King Engineering Associate Inc.

DESIGNED	THE SIGNATURE OF THE QUALITY CONTROL OFFICER IN THIS SPACE INDICATES THAT ALL REQUIRED PERMITS HAVE BEEN OBTAINED AND THAT CONSTRUCTION IS AUTHORIZED TO COMMENCE.
DRAWN	
CHECKED	
ODG	
ODG	



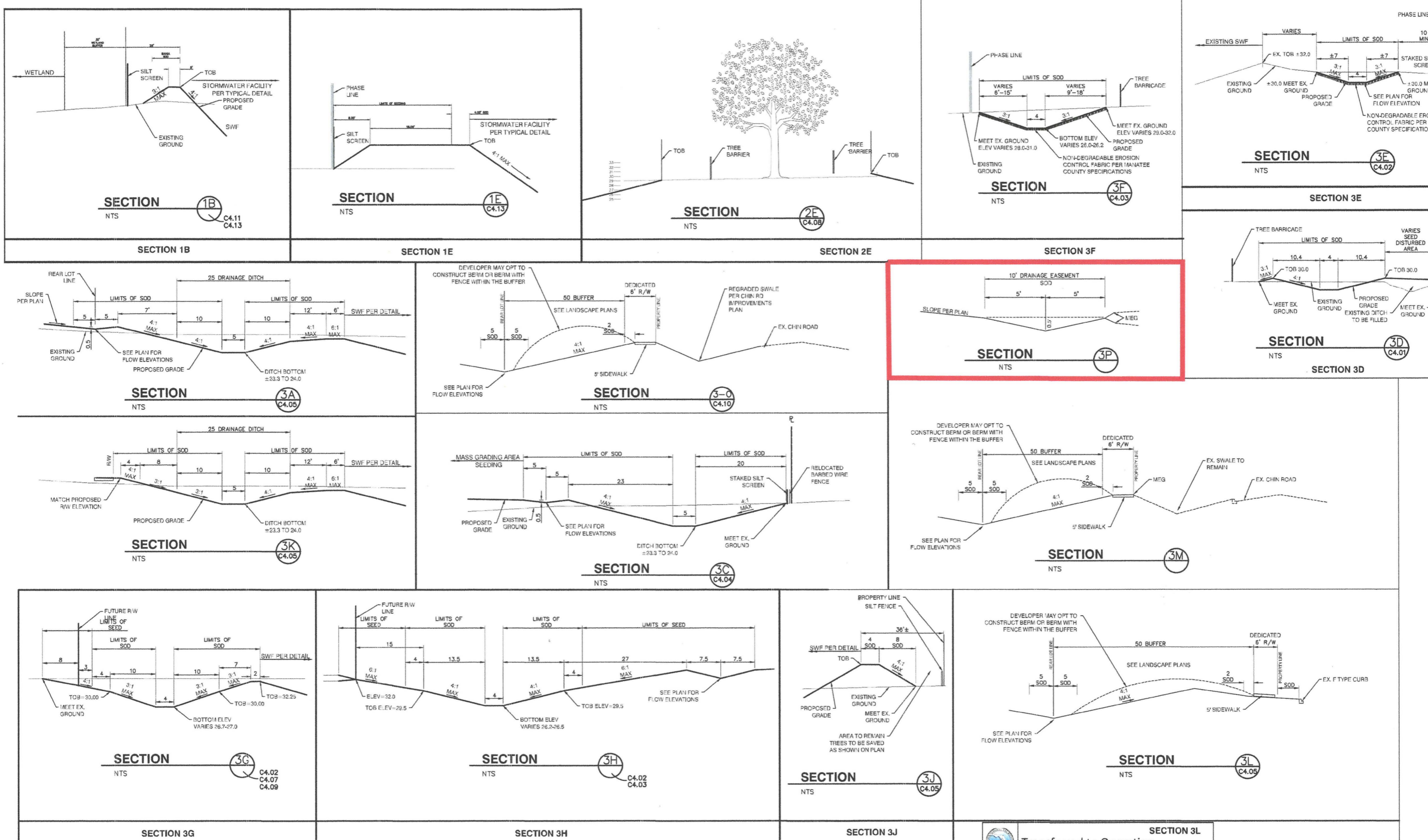
2930 University Parkway
Sarasota, Florida 34243
Phone 941 358-6500
Fax 941 358-6540
www.kingengineering.com
Engineering License #2610

SILVERLEAF PHASE 1
(SUB PHASES A, B, & C)
(SWFWM FKA PHASES 1, 2, & 3)
FOR
MML I, LLC & PGCI, IV, LLC

RECORD DRAWING
PAVING, GRADING AND DRAINAGE PLAN

NO.	DATE	DESCRIPTION	APPROVED BY
6	5-30-14	RECORD DRAWINGS	
4	10-15-13	REVISE F.F.	
3	8-23-13	MODIFY INLETS	
2	5-26-13	REVISE GRADING	
1	3-25-13	GRADING ADDED TO LOTS 21-22, 97-98 SWF INFLOW PIPES INVERTS ADDED	

JOB NO.	8854-009-100	SHEET NO.	C4.12
DATE	01/31/2013		
SCALE	AS SHOWN		



C:\chris\854-009\00\CADD\CDS\DET\TYP.dwg, October 21, 2013 2:37 PM, MICHAEL S PIGNOTTI, King Engineering Associate Inc.
 © COPYRIGHT 2013 KING ENGINEERING ASSOCIATES, INC. ALL RIGHTS RESERVED. THIS DRAWING IS THE PROPERTY OF KING ENGINEERING ASSOCIATES, INC. AND IS NOT TO BE REPRODUCED OR TRANSMITTED IN ANY FORM OR BY ANY MEANS, ELECTRONIC OR MECHANICAL, WITHOUT PERMISSION IN WRITING FROM KING ENGINEERING ASSOCIATES, INC.

DESIGNED	THE SIGNATURE OF THE QUALITY CONTROL OFFICER IN THIS SPACE INDICATES THAT ALL REQUIRED CHECKS HAVE BEEN OBTAINED AND THAT CONSTRUCTION IS AUTHORIZED TO COMMENCE.
DRAWN	
CHECKED	
DATE	

King
 ENGINEERING ASSOCIATES, INC.
 2930 University Parkway
 Sarasota, Florida 34243
 Phone 941 358-6500
 Fax 941 358-6540
 www.kingengineering.com
 Engineering License #2610

SILVERLEAF PHASE 1
 (SUB PHASES A, B, & C)
 (SWFWMD FKA PHASES 1, 2, & 3)
 FOR
 MML I, LLC & PGCI, IV, LLC

TYPICAL SECTIONS AND DETAILS

NO.	DATE	DESCRIPTION	APPROVED BY
2	8-23-13	REV SECTION 3L AND 3M ADD 3-0	
1	3-25-13	ADD SECTION D AND F	

JOB NO.	8854-009-100	SHEET NO.	
DATE	01/31/2013		C7.01
SCALE	AS SHOWN		